

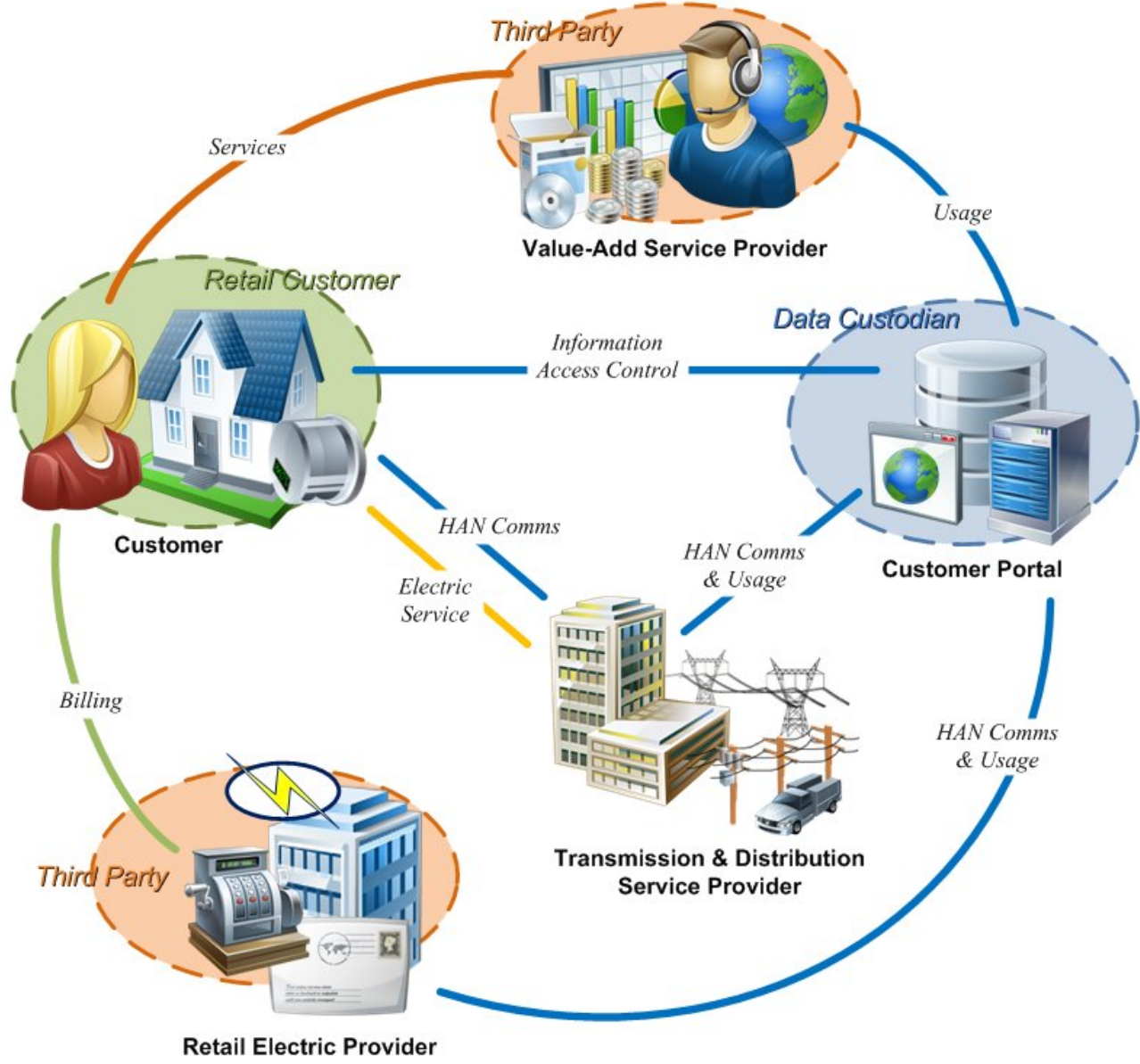
System Evolution & Legacy Integration: Energy Services Provider Interface (ESPI)

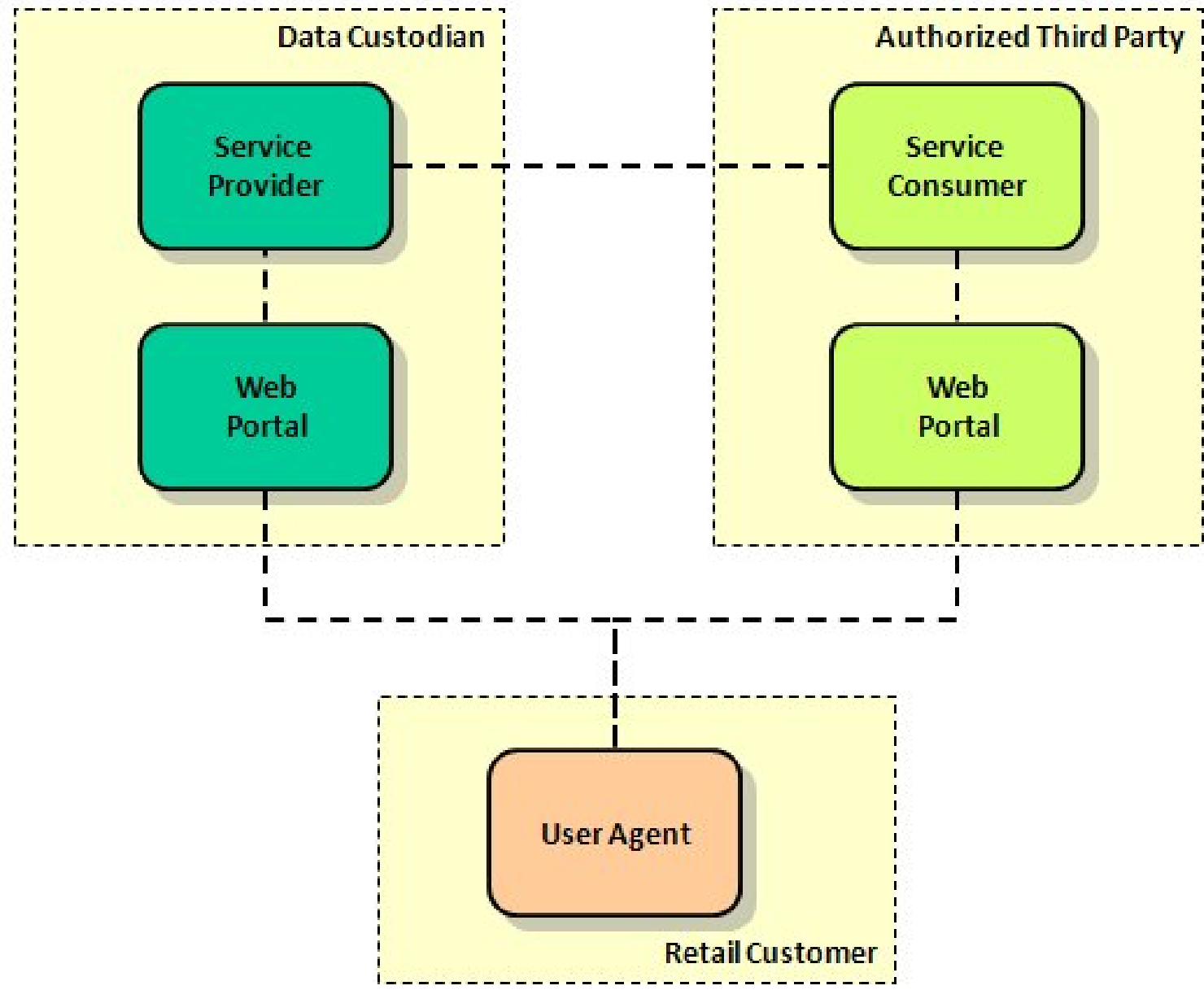
David Mollerstuen
Tendril

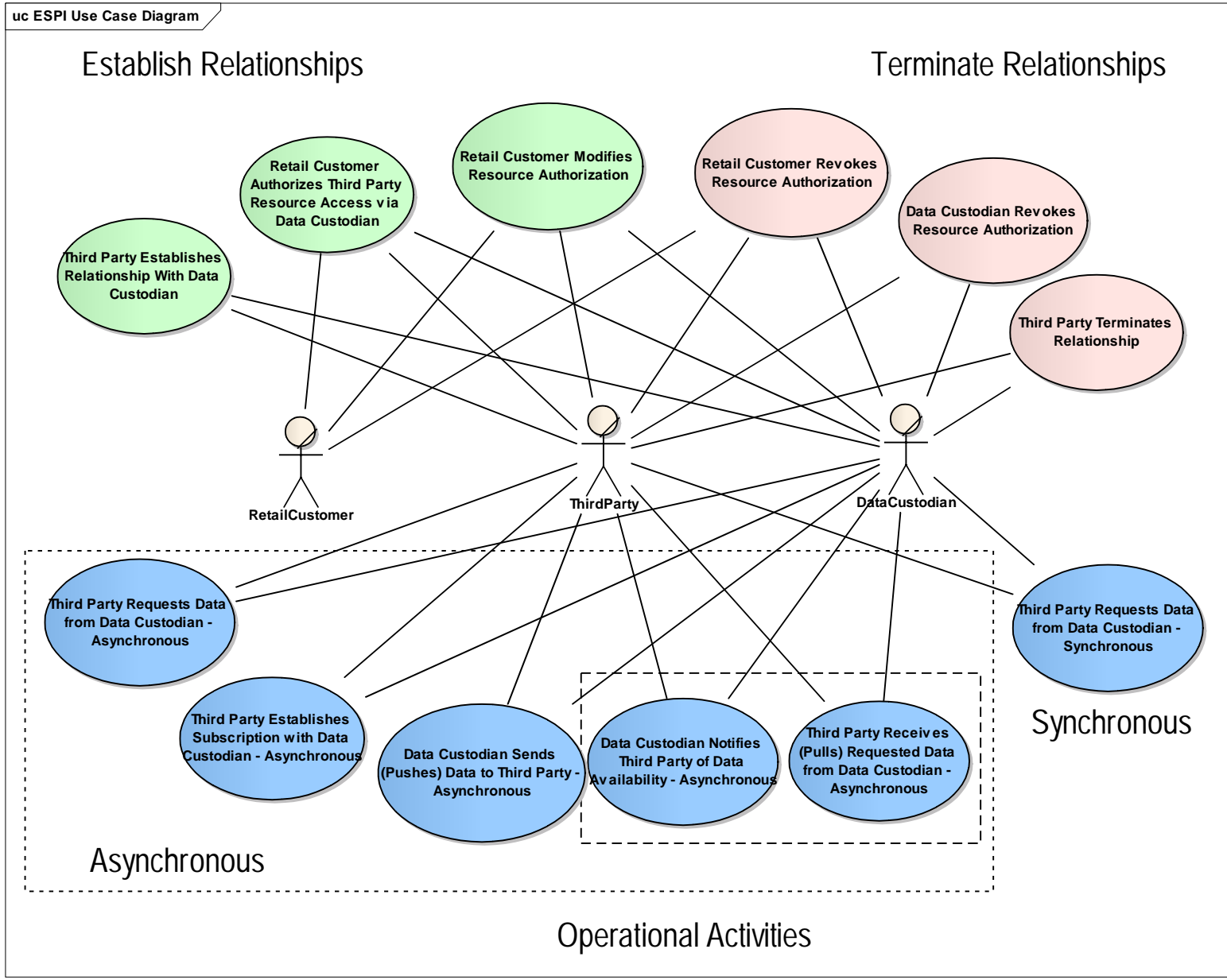
dmollerstuen@tendrilinc.com

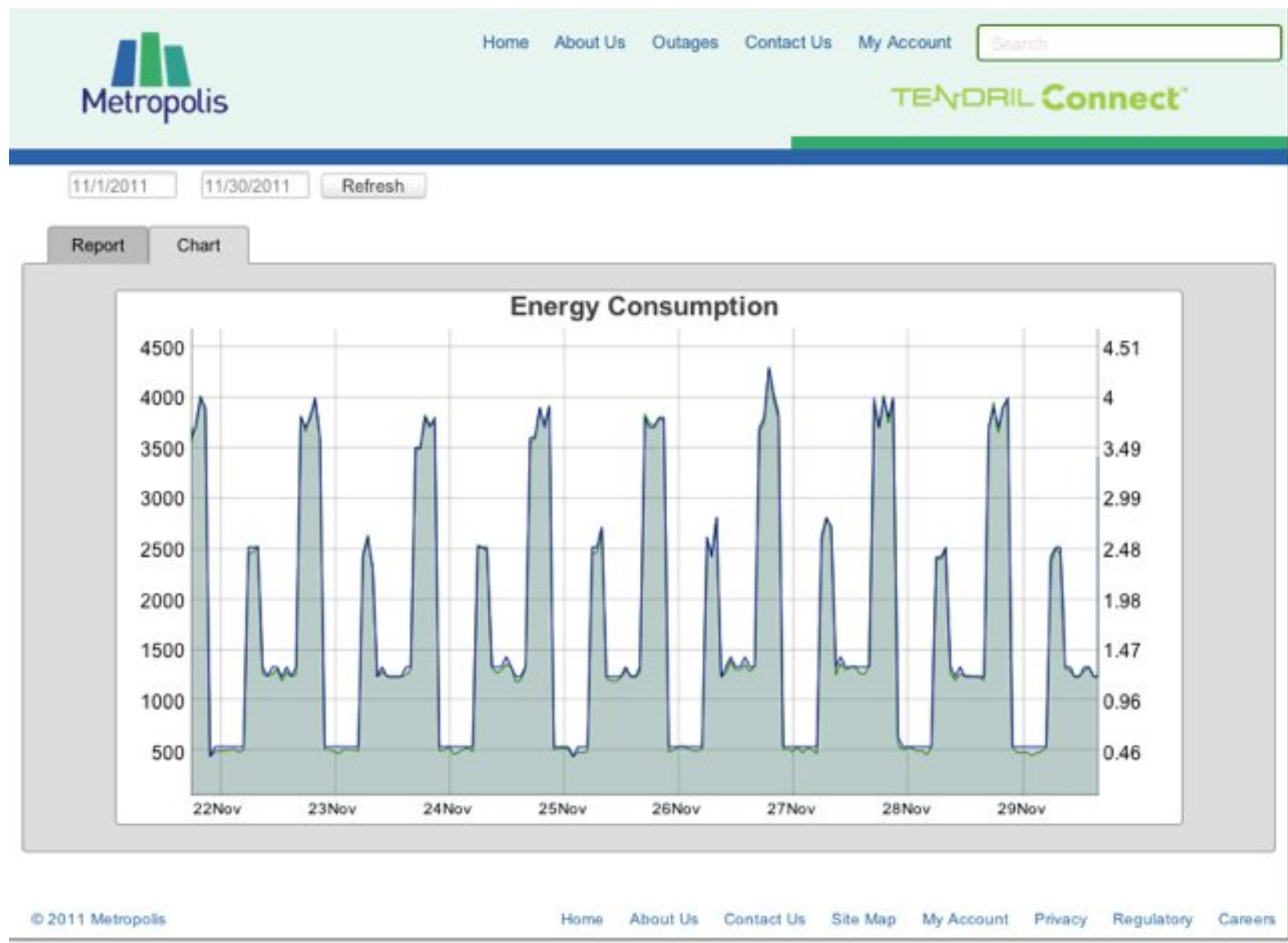
www.tendrilinc.com

- Protocol, data model, and best practices to securely deliver a consumer's Energy Usage Information to a 3rd Party, under consumer direction and for the consumer's benefit
- NAESB REQ.21, completed October 18 2011
- Intended to satisfy the assumptions and requirements laid out in OpenADE
- Built on NAESB REQ.18 WEQ.19, PAP10 Energy Usage Information









© 2011 Metropolis

Home About Us Contact Us Site Map My Account Privacy Regulatory Careers

- Testing and Certification activity occurring in OpenADE
<http://osgug.ucaiug.org/sgsystems/OpenADE/default.aspx>
- Sample implementation activity occurring via OpenESPI
<http://www.openespi.org/>
- DOE Funding Opportunity Announcement
<http://www.grants.gov/search/search.do?mode=VIEW&oppld=130273>

Thank You!

David Mollerstuen
Standards Development Architect, Tendril
SGIP Plenary Secretary
Chair, OpenADE
Co-Chair, NAESB ESPI
dmollerstuen@tendrilinc.com
<http://tendrilinc.com>

Q. How does a standards-based interface such as ESPI simplify legacy integration for Utilities?

1. Prior to ESPI, usage information integrations were “m x n”; ESPI allows implementation to a single, common interface.
2. Existing vendors (e.g. MDMS vendors) will trend towards making ESPI interface a standard offering in their products

- Q. There's been a lot of talk about "Green Button" here at Grid-Interop -- what's the relationship between Green Button and ESPI, and how does that relate to legacy integration?
- Green Button data format is based on ESPI
 - Green Button is “snapshot” of Energy Usage Information delivered directly to the consumer. ESPI facilitates delivery (historical and ongoing) of Energy Usage Information to a 3rd Party
 - By implementing Green Button, Data Providers begin the process of dynamic delivery of Energy Usage Information to consumer – initial steps towards full ESPI support.
 - Incidentally, assist in the development of compelling, valuable applications built on Energy Usage Information