

Using the IntelliGrid_(sm) Methodology and GWAC Stack in IT Smart Grid Project Management

John J. Simmins, Brian Green
Electric Power Research Institute

Michael Tao
Boreas Group

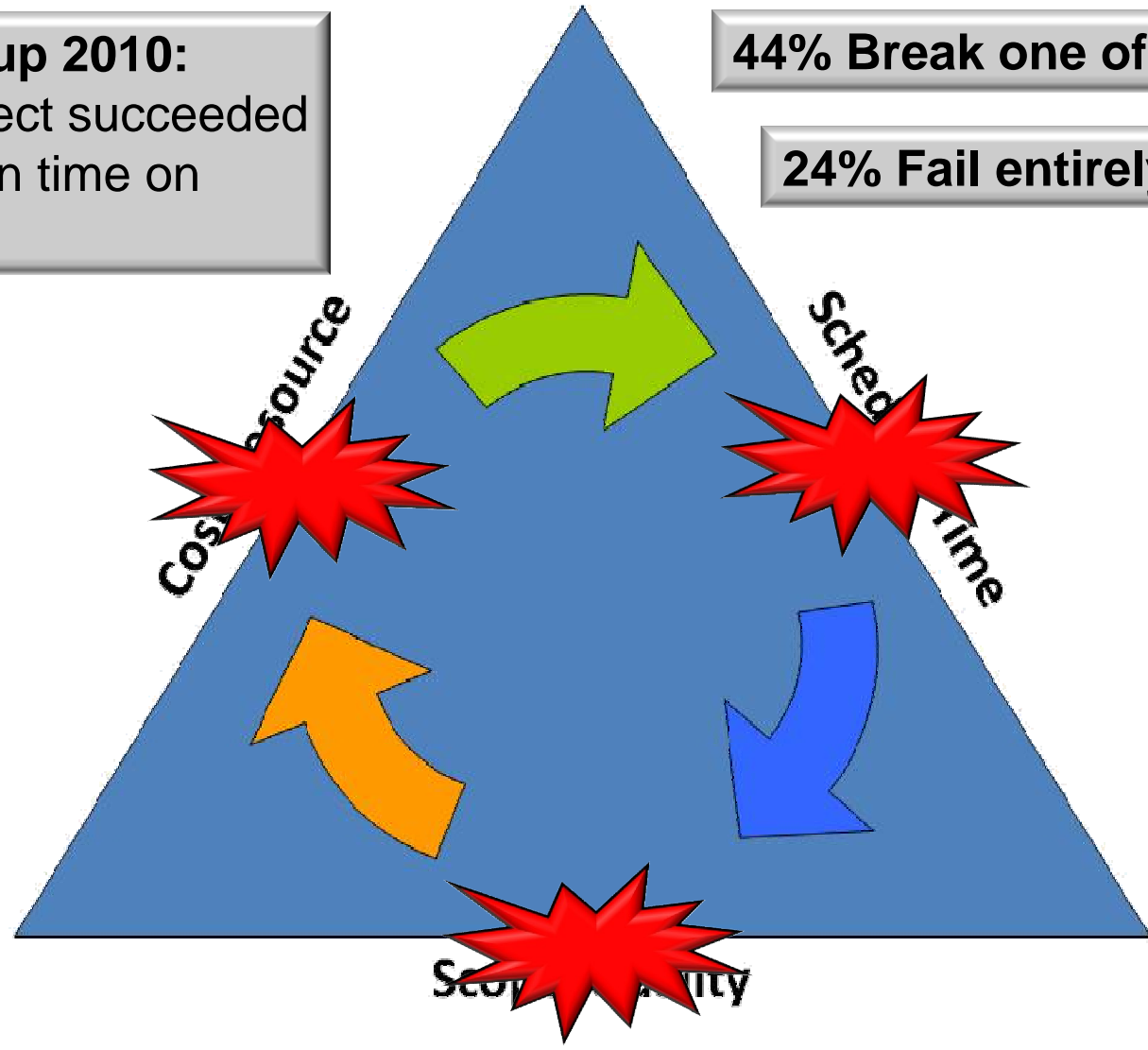
- Introduction
- Framing the problem.
- Enter the GWAC Stack and IntelliGrid_(sm) methodology.
- Some project management terminology.
- Application of the IntelliGrid methodology and GWAC stack to project management.

- Requirements Gathering
- Project Planning
- Testing (e.g. System Acceptance Testing)
- Training
- Security Risk Analysis
- Governance

Standish Group 2010:
Only 32% project succeeded by delivering on time on budget

44% Break one of the constraints

24% Fail entirely

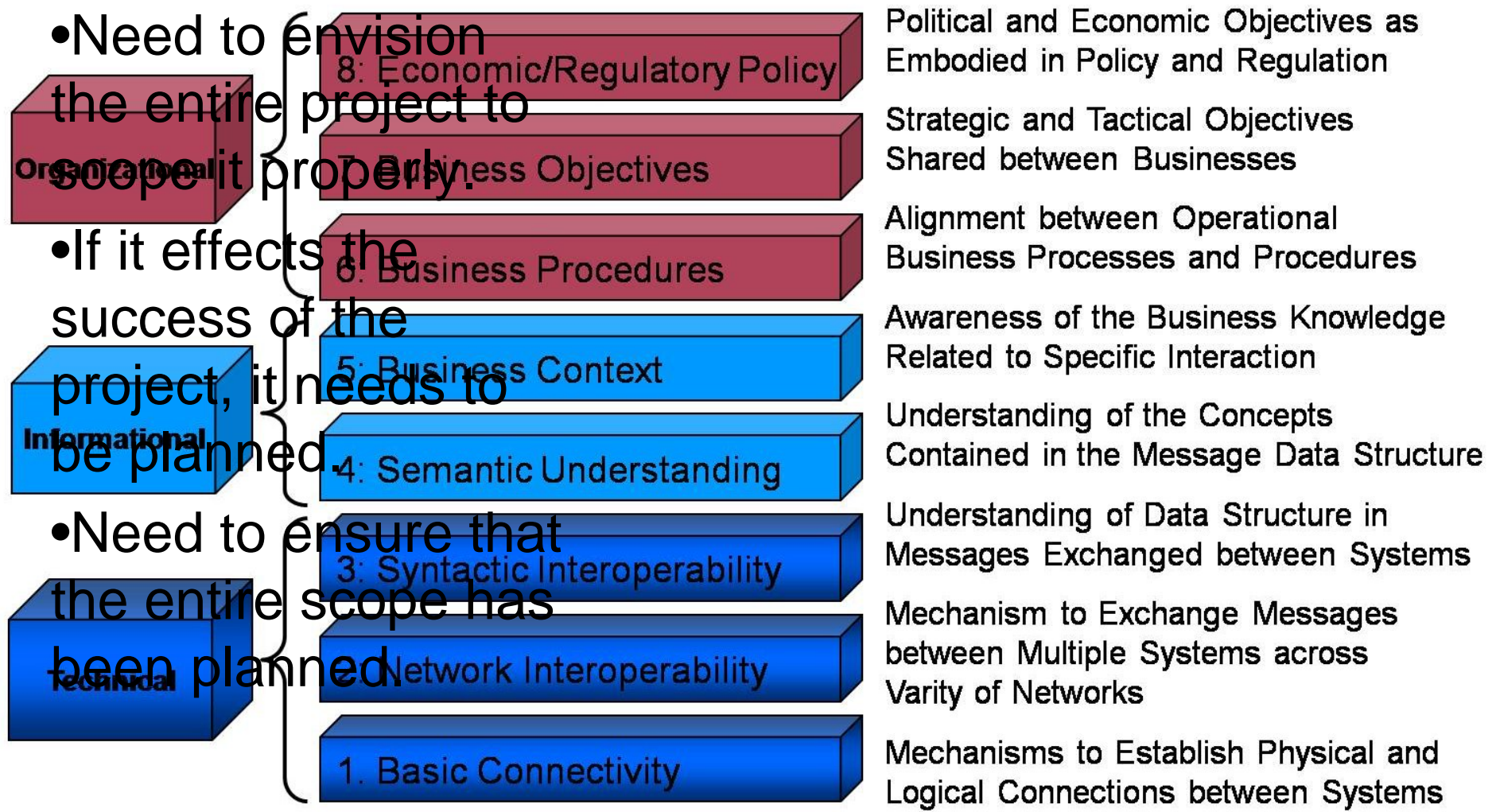


- Nearly all respondents said that project management was critical to successful project (47% say “critical” and 43% say “somewhat important”) .
- Less than one half (49%) said they follow a formal project management methodology.
- Around 20% said they have any project management tools.
- Results:
 - Less than one third (27%) said they do a very good job of managing projects.
 - Only 10% said they do an excellent job.

*Closing the Gap: The Link Between Project Management Excellence and Long-Term Success, Economist Intelligence Unit Limited, 2009.

- Lack of a conceptual model of the Smart Grid IT Project.
- Lack of a methodology for scoping and managing the project.



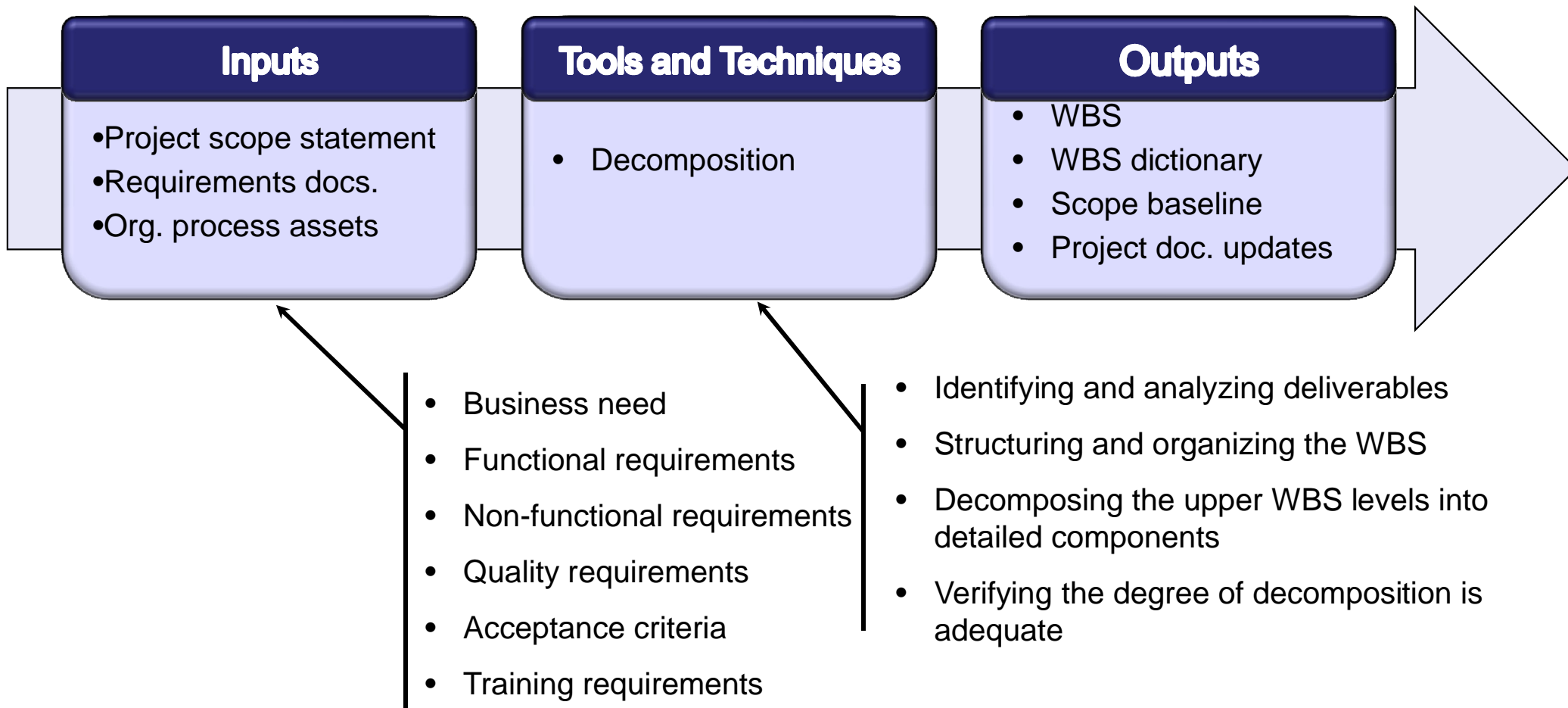


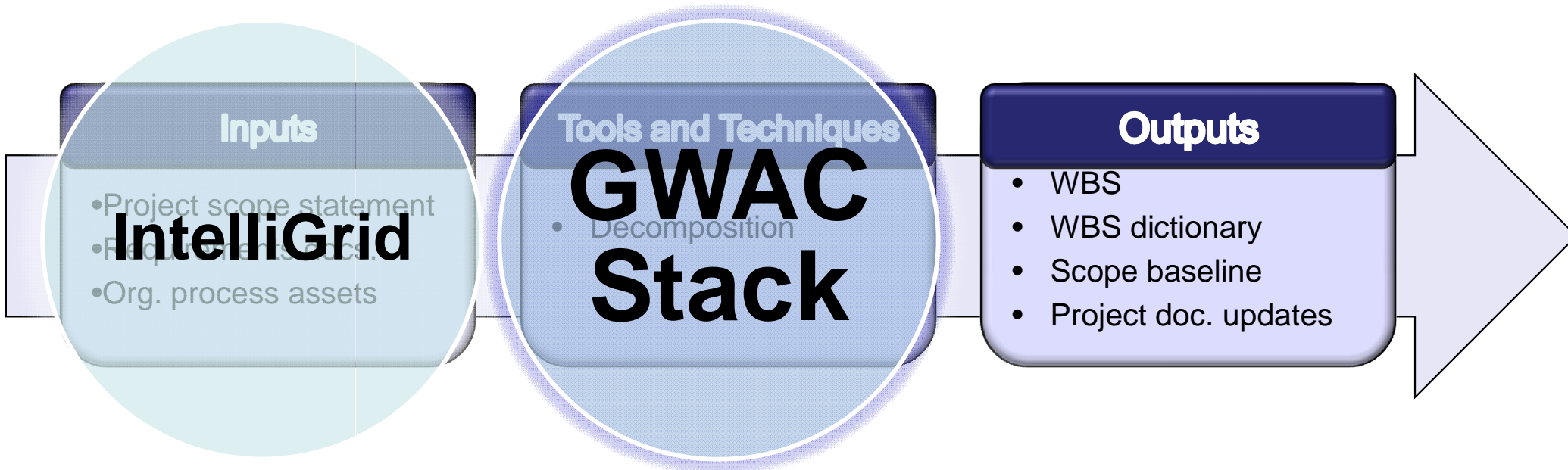
•Need to envision the entire project to scope it properly.

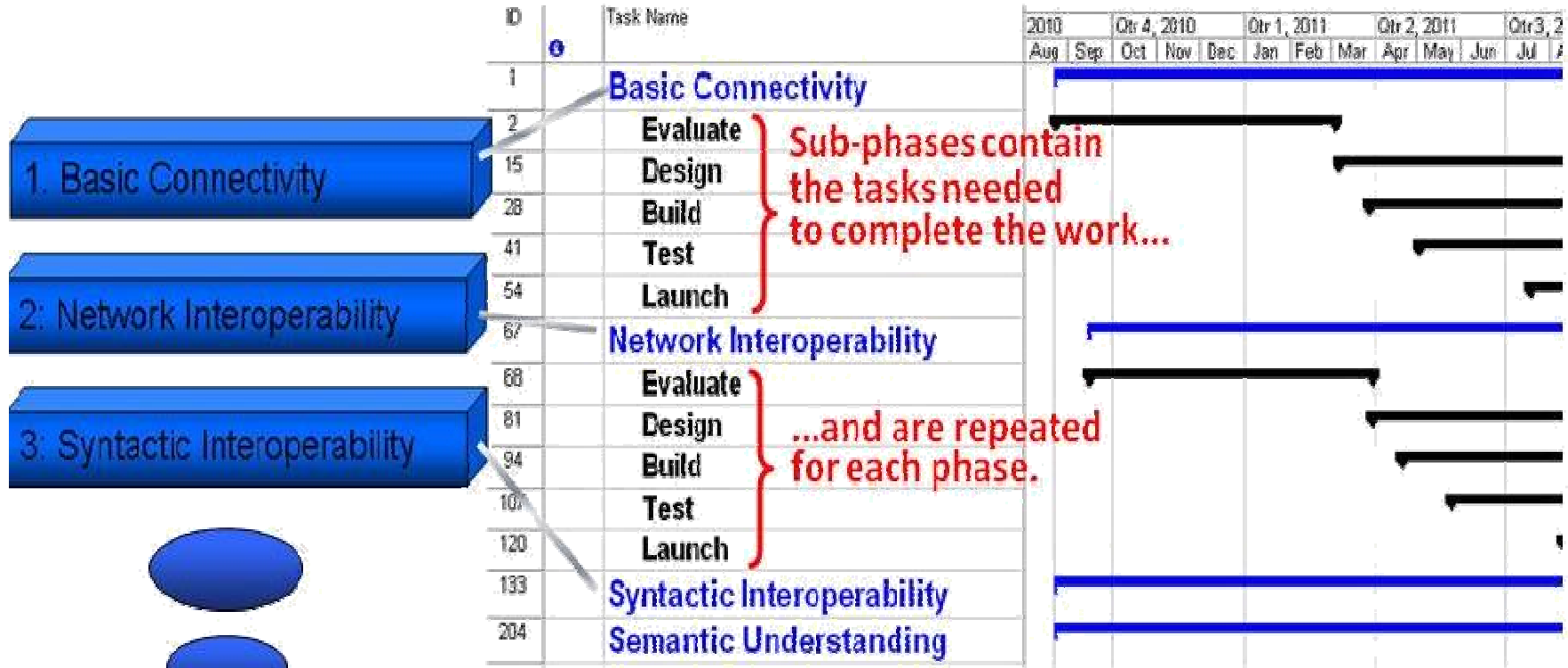
•If it effects the success of the project, it needs to be planned.

•Need to ensure that the entire scope has been planned.

The Work Breakdown Structure (WBS) is a deliverable-oriented hierarchical decomposition of the work to be executed by the project team to accomplish the project goal.



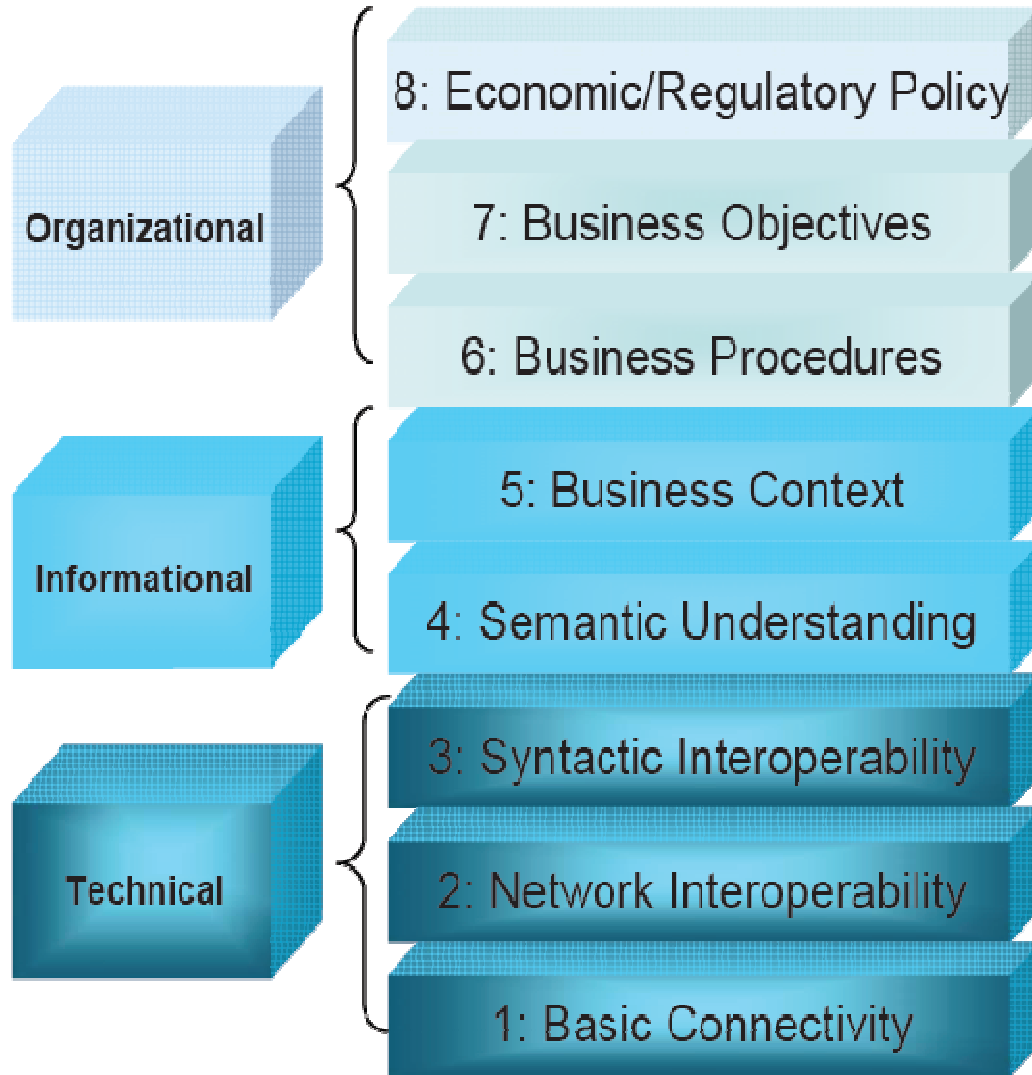




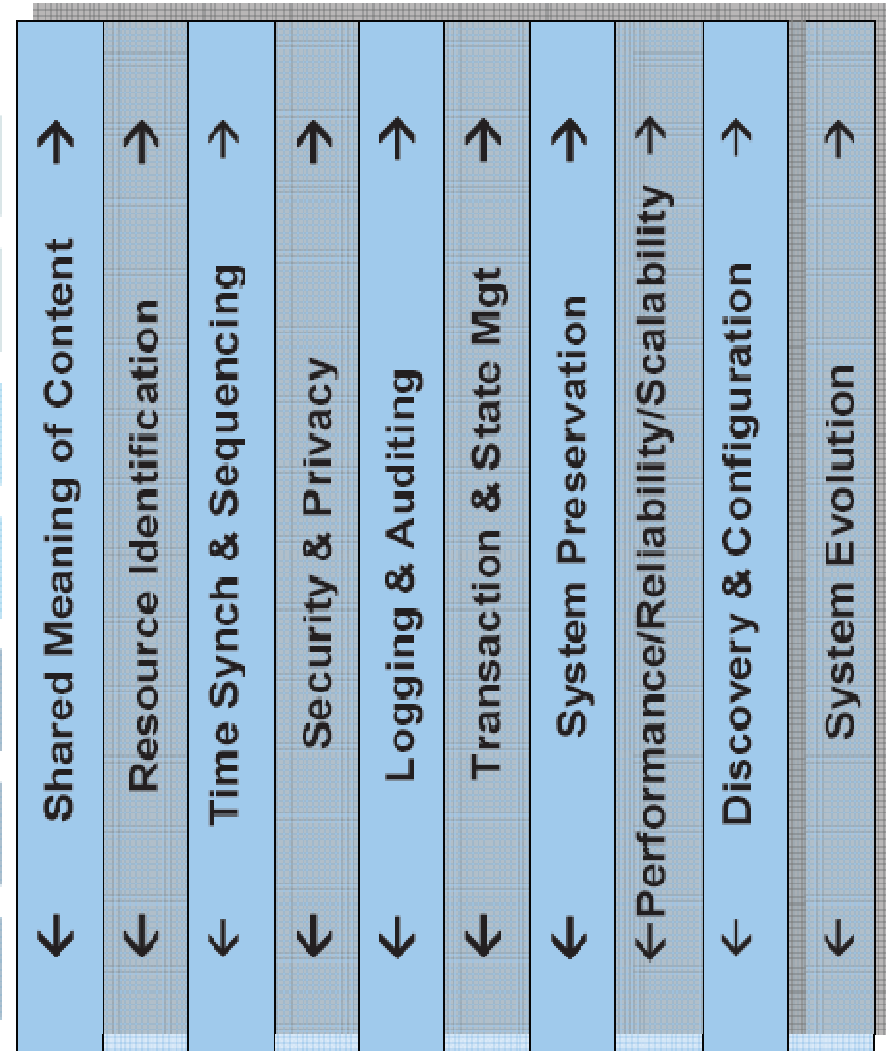
Project Plan

The 8 GWAC Stack interoperability categories can be used to establish the project phases with the Project Life Cycle Phases defining the sub-phases

Interoperability Categories



Cross-cutting Issues

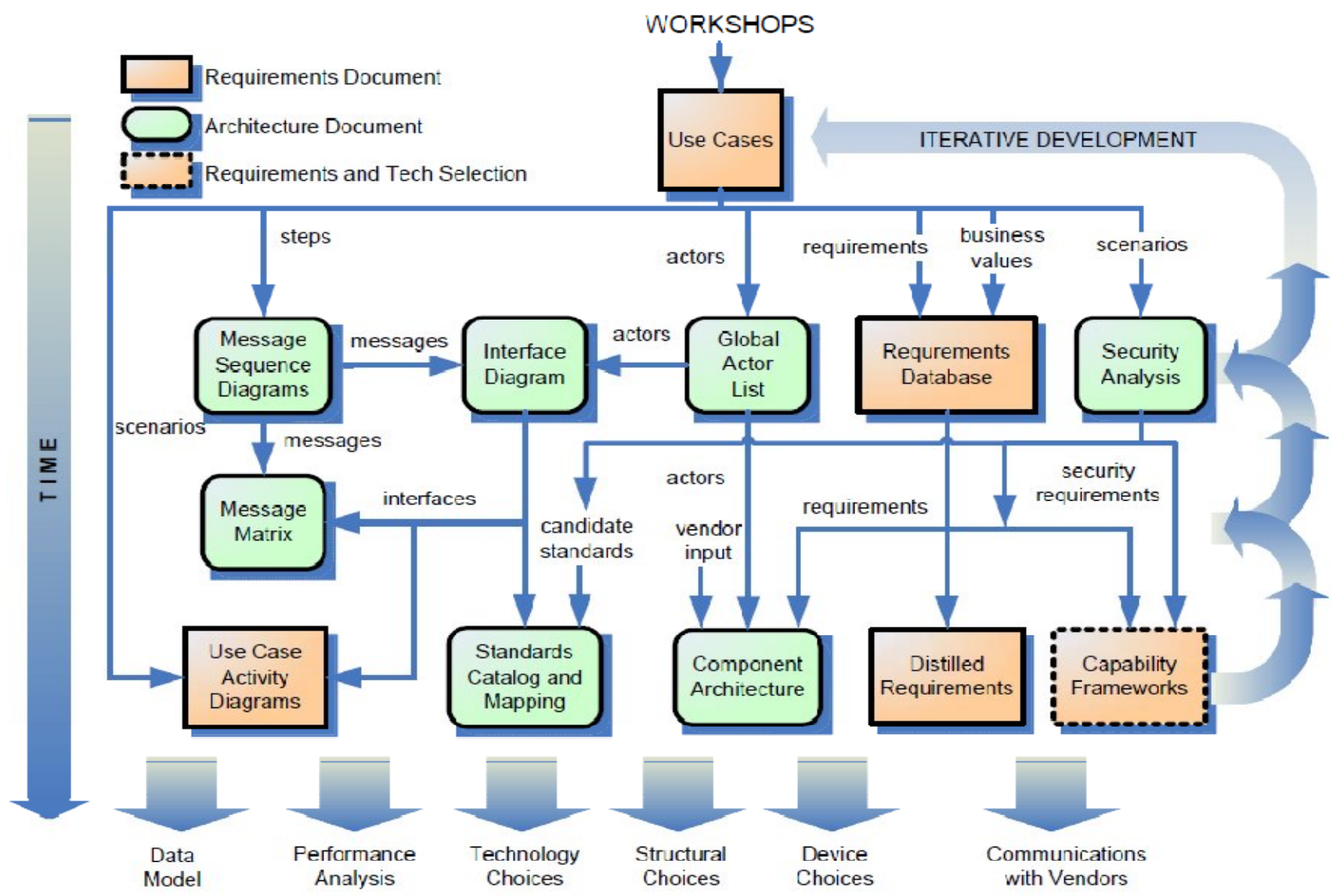


Task Name	2010		Qtr 4, 2010			Qtr 1, 2011			Qt
	Aug	Sep	Oct	Nov	Dec	Jan	Feb	Mar	A
Basic Connectivity	[Gantt bar: Aug 2010 - Mar 2011]								
Evaluate	[Gantt bar: Sep 2010 - Feb 2011]								
Design	[Gantt bar: Mar 2011 - Apr 2011]								
Build	[Gantt bar: Apr 2011 - May 2011]								
Test	[Gantt bar: May 2011 - Jun 2011]								
Launch	[Gantt bar: Jun 2011 - Jul 2011]								
Network Interoperability	[Gantt bar: Sep 2010 - Mar 2011]								
Evaluate	[Gantt bar: Oct 2010 - Feb 2011]								
Design	[Gantt bar: Mar 2011 - Apr 2011]								
Build	[Gantt bar: Apr 2011 - May 2011]								
Test	[Gantt bar: May 2011 - Jun 2011]								
Launch	[Gantt bar: Jun 2011 - Jul 2011]								
Syntactic Interoperability	[Gantt bar: Sep 2010 - Mar 2011]								
Semantic Understanding	[Gantt bar: Sep 2010 - Mar 2011]								

Cross Cutting Documentation

- Security Plan
- DR Plan
- Maint. Plan
- Etc.

Project Plan



1. Description of Project Management

- Failure to plan is planning to fail.
- Bad project management is the single biggest cause of failed projects.

2. GWAC Stack

- GWAC Stack is a model for defining project scope.
- GWAC Stack is clearly seen and addressed in the project plan.

3. Apply the Methodology to Smart Grid IT Projects

- Applying the IntelliGrid methodology can completely scope the project.
- It isn't magic.

John Simmins

EPRI

jsimmins@epri.com

865-218-8110

***A Utility Application Implementation Strategy Using the
EPRI IntelliGrid Methodology And the
GridWise* Architecture Council Stack as a Model, 1024590***

*GridWise is a registered trade mark of the GridWise Architecture Council